



Atmosphere

# 26

4BHK CONCEPT APARTMENTS



FOREVER

happiness

A journey that started one & a half decades ago, continues further... with its goodness emanating FOREVER !

Our latest offering Atmosphere 26 may not have the prefix Forever, but nonetheless follows the underlying philosophy in each of our projects. What started with Forever Atmosphere continues further with our new offering "Atmosphere 26"

Our projects are planned and executed such that they bring comfort and joy to their residents now & FOREVER .

A lifetime of quality assurance, a lifetime of satisfaction and a lifetime of happiness. FOREVER HAPPINESS.



## FOREVER Group

Creating better lifestyles for everyone

Continuing on its path to create practical yet luxurious homes that offer a distinct lifestyle. As one of the leading real estate developers, **FOREVER Group** is steadfast in its focus towards creating better living experiences across the spectrum. Our projects are conceptualized to change and elevate the way you live by delivering maximum value both for you and your money. Our motto has been to deliver on time and to deliver as promised each and every time. We take extra pride in our environmental stewardship through various green initiatives across our projects. Over the years we have grown from strength to strength building landmarks that are synonymous with beauty, quality and longevity.

## Our Values



Quality



Delivering Value



Commitment



Creativity

## Promise of Quality

At **FOREVER Group**, we remain unwavering in our dedication to adhering strictly to building codes and standards. Through rigorous quality control measures and meticulous maintenance protocols, we ensure that Atmosphere 26 maintains its structural integrity and offers a stellar finish.





The challenge at Atmosphere 26 for us at architect's was to provide all the luxury and utility in a single tower project.

Fortunately we have been able to plan such that it fulfills all needs of a modern home and one that shall enhance the lifestyle of the residents. It is an ideal mix of aesthetics merging with functionality, together with optimum safety & security.

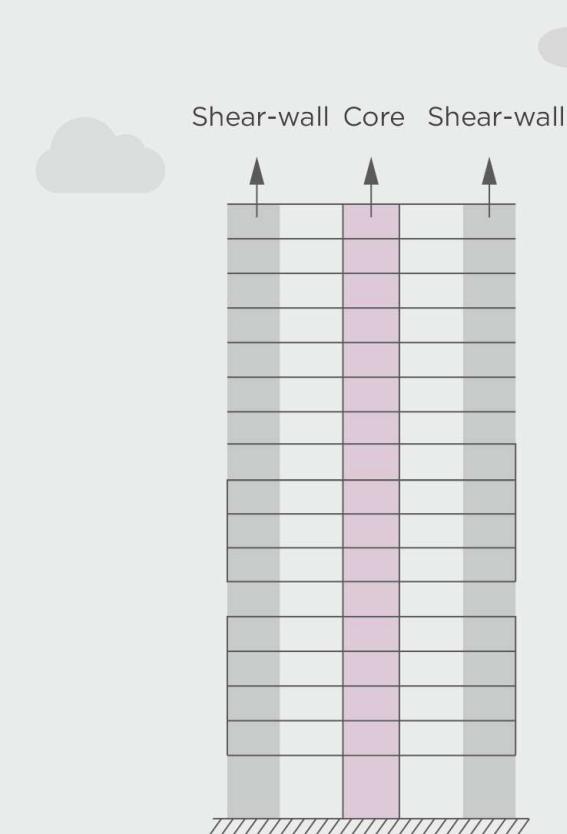
We foresee a small and cohesive community of like-minded residents enjoying a rich lifestyle forever & ever!

- KUSHAL, KIRAN & HARESH

Architects:

space plus

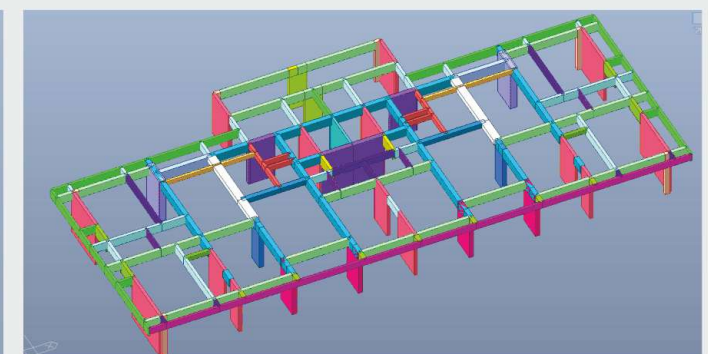
Architecture • Planning • Interiors



### Innovative Structural Design for Unmatched Stability

Atmosphere 26 boasts a cutting-edge structural system meticulously designed to ensure the utmost safety and longevity. With the integration of a special beam-column RCC frame, **multiple ductile shear walls**, and a **robust RCC lift core**, our structure stands as a testament to the pinnacle of engineering ingenuity.

COMTEN  
ENGINEERS



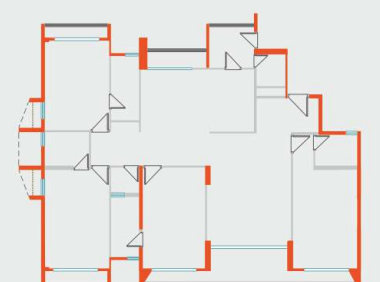
### Wind, sweeps you off your feet, Literally!

Atmosphere 26 is smartly planned with an open **South West corner**. This allows for abundance of natural breeze across the whole campus.



### Cool & Green...Outer Walls

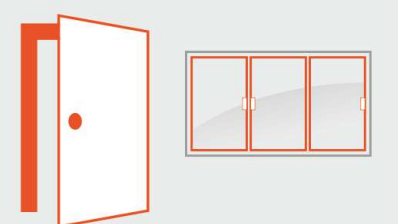
The 150 mm Outer Walls at Atmosphere 26, ensure superior insulation & strength. This results in energy and structural efficiency, leading to a greener planet.



### 'Higher' Living in the true sense

At Atmosphere 26 everything is about higher living, even the door height. The 8 feet doors with wooden box frames and laminates reflect understated luxury.

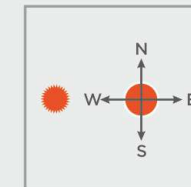
3-track aluminium sliding windows (66% opening) with mosquito net & toughened glass.



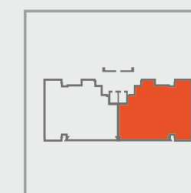


# FOREVER exclusive

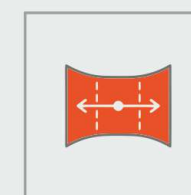
When your homes are **FOREVER** then why should their exceptional features be any different?



1<sup>st</sup> time in Vadodara -  
Permanently open south-west direction



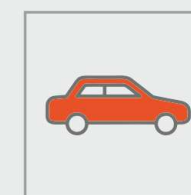
Only  
2 apartments per floor



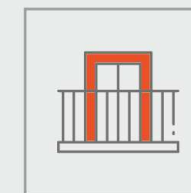
541 ft. sweeping panoramas  
for all master bedrooms



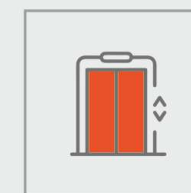
Canal facing frontage for  
Forever green views



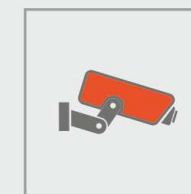
3 car parking



38 feet long balcony



1 stretcher + 1 passenger lift



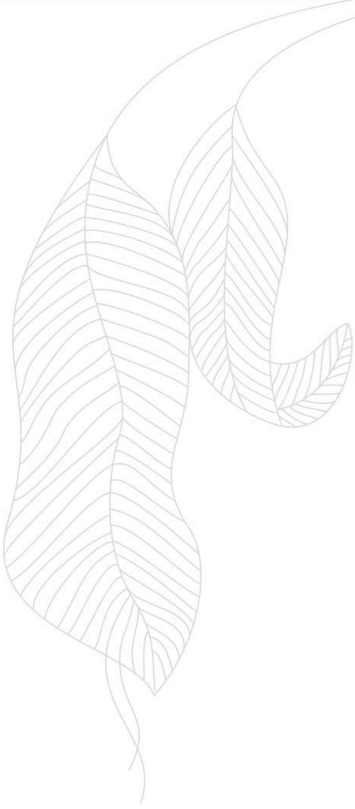
CCTV Cameras  
all across the Campus



24x7 Security  
with Security Cabin



FOREVER  
*airy*



Atmosphere 26, with an open south-west,  
is the real estate equivalent of a **FOREVER**  
love letter to natural light and fresh air,  
where every day is a breeze and every  
evening a sunset delight.

Are you ready to embrace the sunny side  
of life, **FOREVER**?





# FOREVER classy

Atmosphere 26, with an open south-west, is the real estate equivalent of a **FOREVER** love letter to natural light and fresh air, where every day is a breeze and every evening a sunset delight.

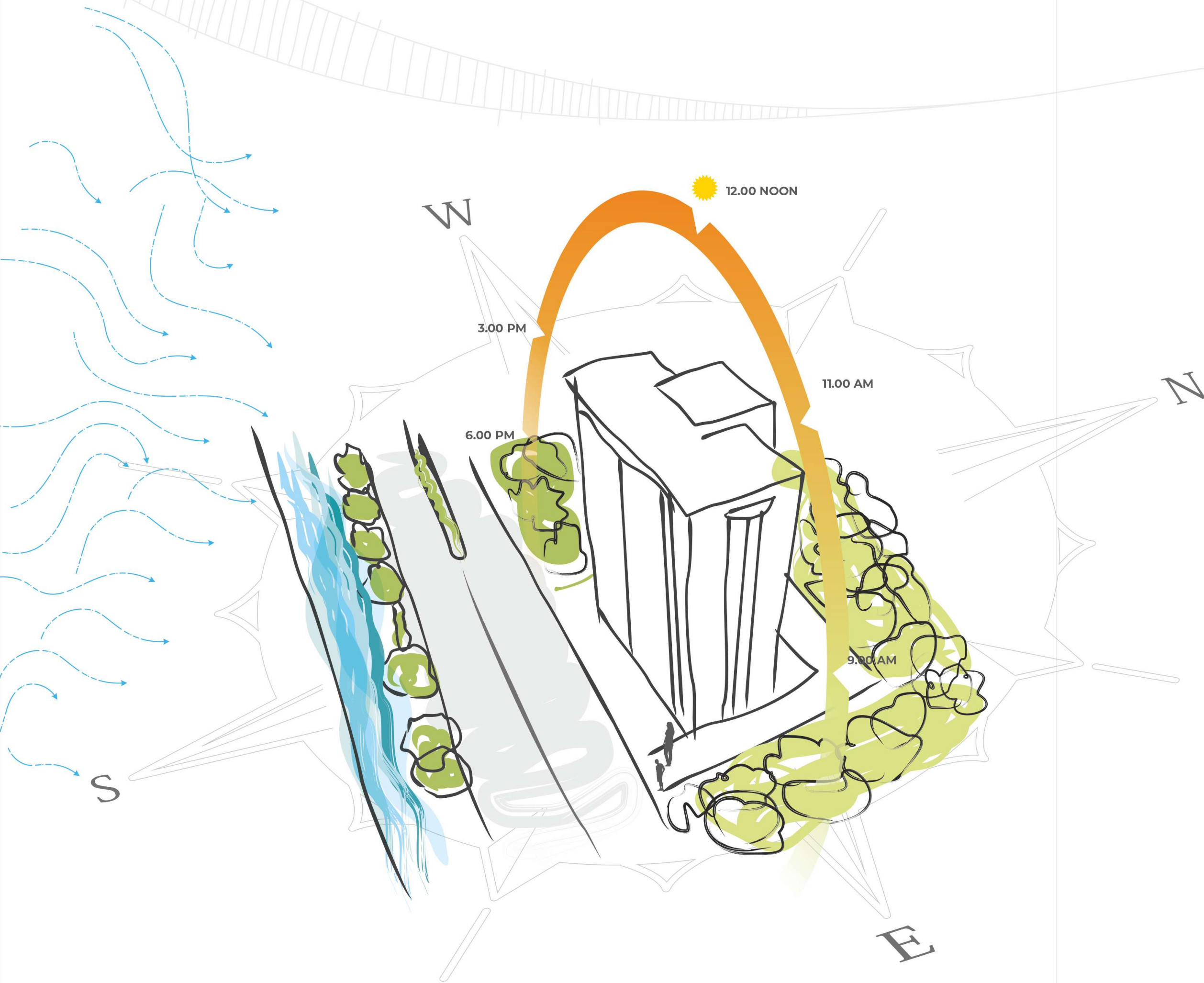
Are you ready to embrace the sunny side of life, **FOREVER**?





# Atmosphere 26

Embark on a sun-kissed journey in your homes at Atmosphere 26. North-South orientation will fill your living spaces with natural light and fresh breeze, without letting in too much heat.

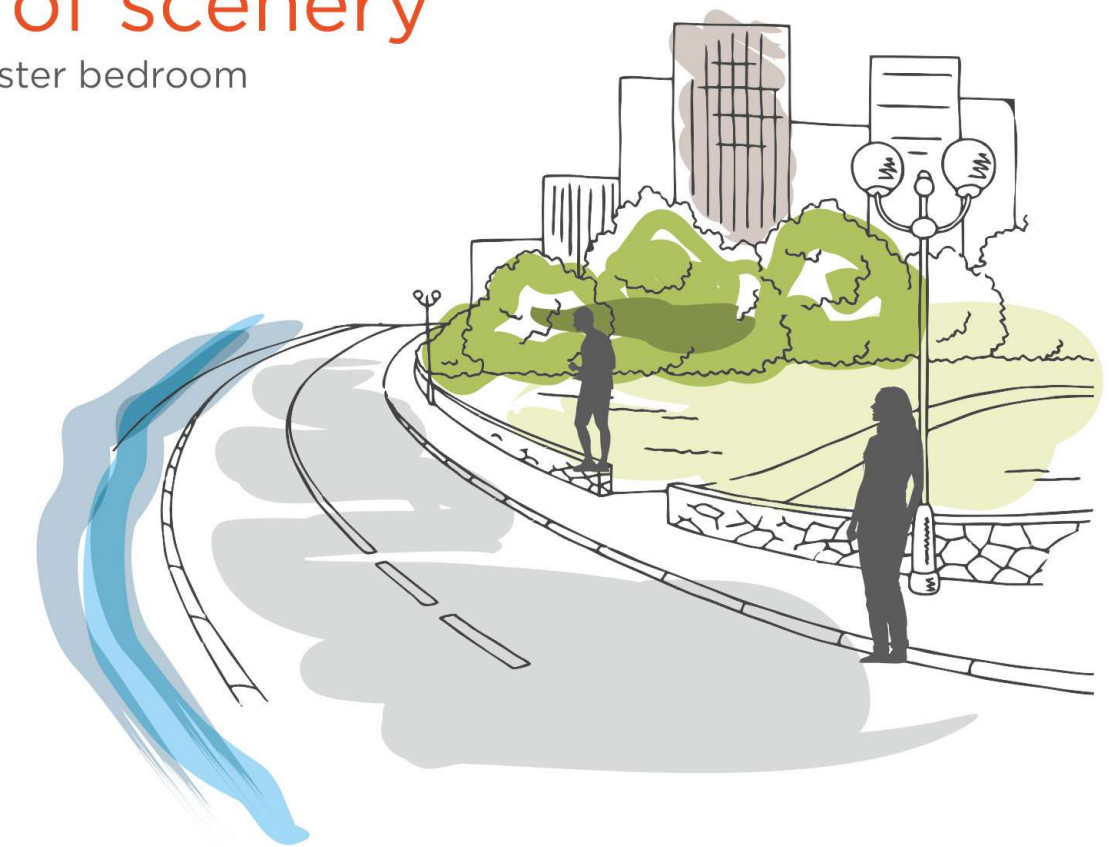


## Premium layout

- Assured Privacy – 40 ft on both sides and 78 ft in the backside
- Large sized private foyer
- Clear kitchen cum dining area with separate passage separate (rare to find in this category)
- Same sized bedrooms for added comfort

## 541 ft. of scenery

from your master bedroom



## 38 ft. long balcony

for blissful days





FOREVER  
*green*

The campus is like a masterclass in fine art – so well-planned, it could convince a concrete jungle to go green with envy. It's where greenery meets genius, making every step an ode to living in harmony with beauty.

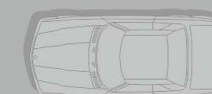
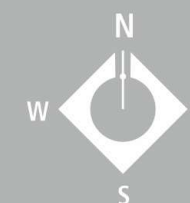
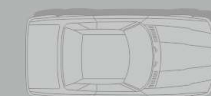




GROUND  
FLOOR PLAN



30 MT. WIDER ROAD





FOREVER

# relaxation

With leisure amenities sprawling from ground to terrace, Atmosphere 26 is on a mission to redefine the word relaxation. From rooftop excitement to ground-level serenity, each floor is a new chapter in the story of "fun-tastic living."

3000 sq.ft.

Ground floor garden

2500 sq.ft.

Terrace floor garden

## Amenities

Banquet Hall

Landscaped Garden on Terrace & Ground Floor

Children Play Area

Indoor Games Room

Gym

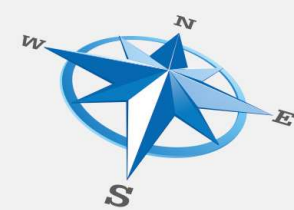
Senior Citizen Seating





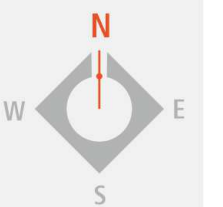
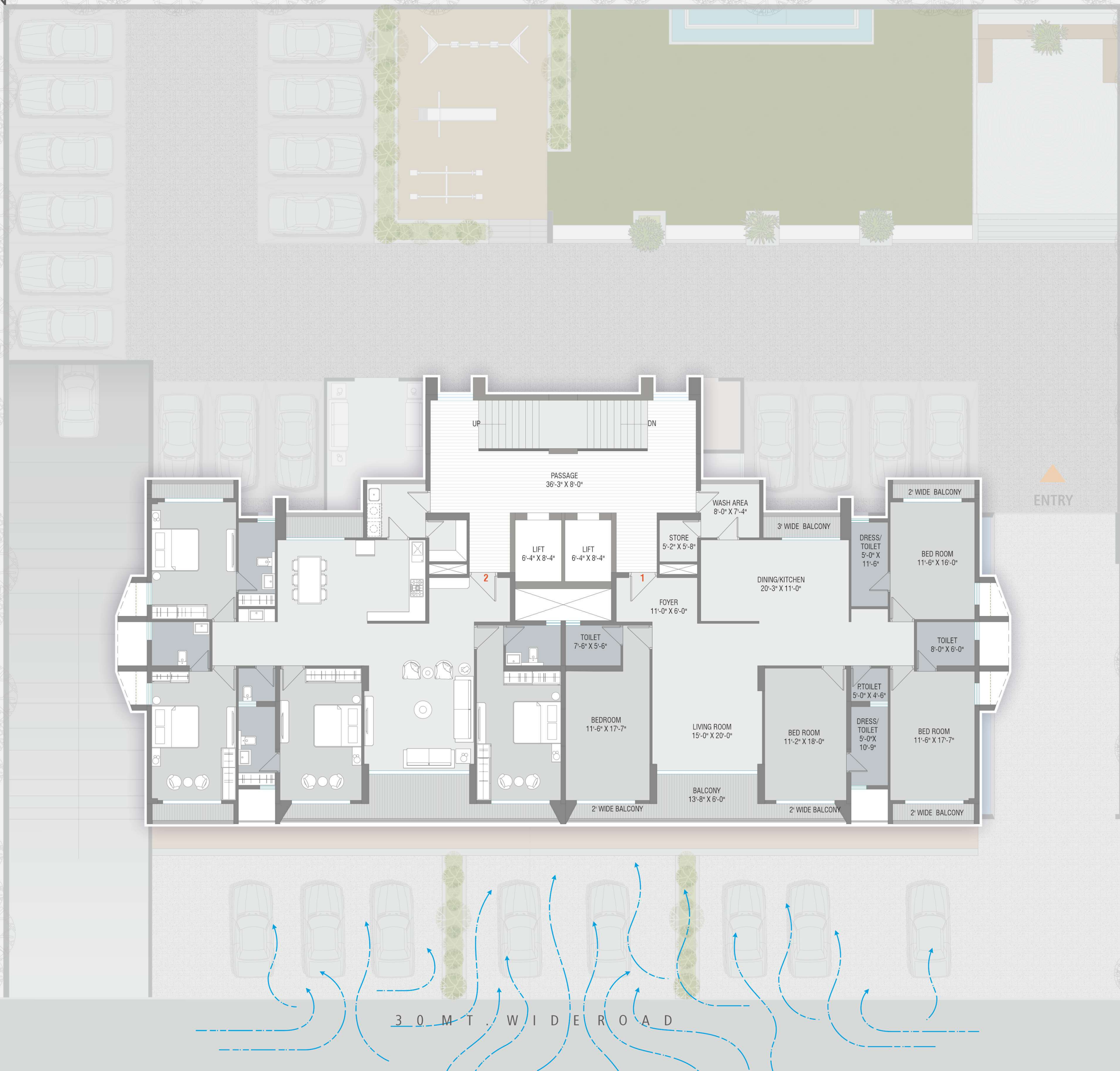
# TYPICAL FLOOR PLAN

1<sup>st</sup> to 13<sup>th</sup> Floor



Open South West Corner

Atmosphere 26 is smartly planned with an open South West corner. This allows for abundance of natural breeze across the whole campus.





TYPICAL FLOOR PLAN  
1<sup>st</sup> to 13<sup>th</sup> Floor

CARPET AREA	: 1812.00 SQ.FT
WASH/BALCONY AREA	: 116.00 SQ.FT
VESTIBULE / FLOWER BED	: 216.00 SQ.FT
TOTAL	: 2144.00 SQ.FT
BUILT UP AREA	: 2382.00 SQ.FT

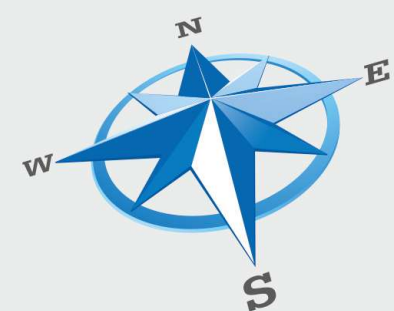




## Unique to this segment

Very rarely does one come across a 4BHK Apartment planning with

- All 4 bedrooms being **Master Bed with attached toilet**.
- 3 out of the 4 bedrooms have similar areas of almost **200 sq. ft.**
- **Attached balcony** with Dining
- **Separate entry** to Wash area



- Space for His & Her **Wardrobe** of at least **7 ft.** in all bedrooms
- Distance between TV & seating in Living room is **15 ft.** for better viewing
- Vestibule & Foyer of over **110 sq. ft.**



FOREVER

*luxury*

Inside, these signature apartments aren't just spacious; they're like a VIP lounge for your furniture, with an open layout that makes even the walls feel neighbourly. Welcome to a home that's a celebration of both room to roam and room to dream.



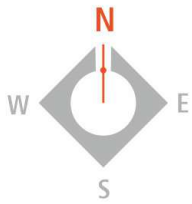
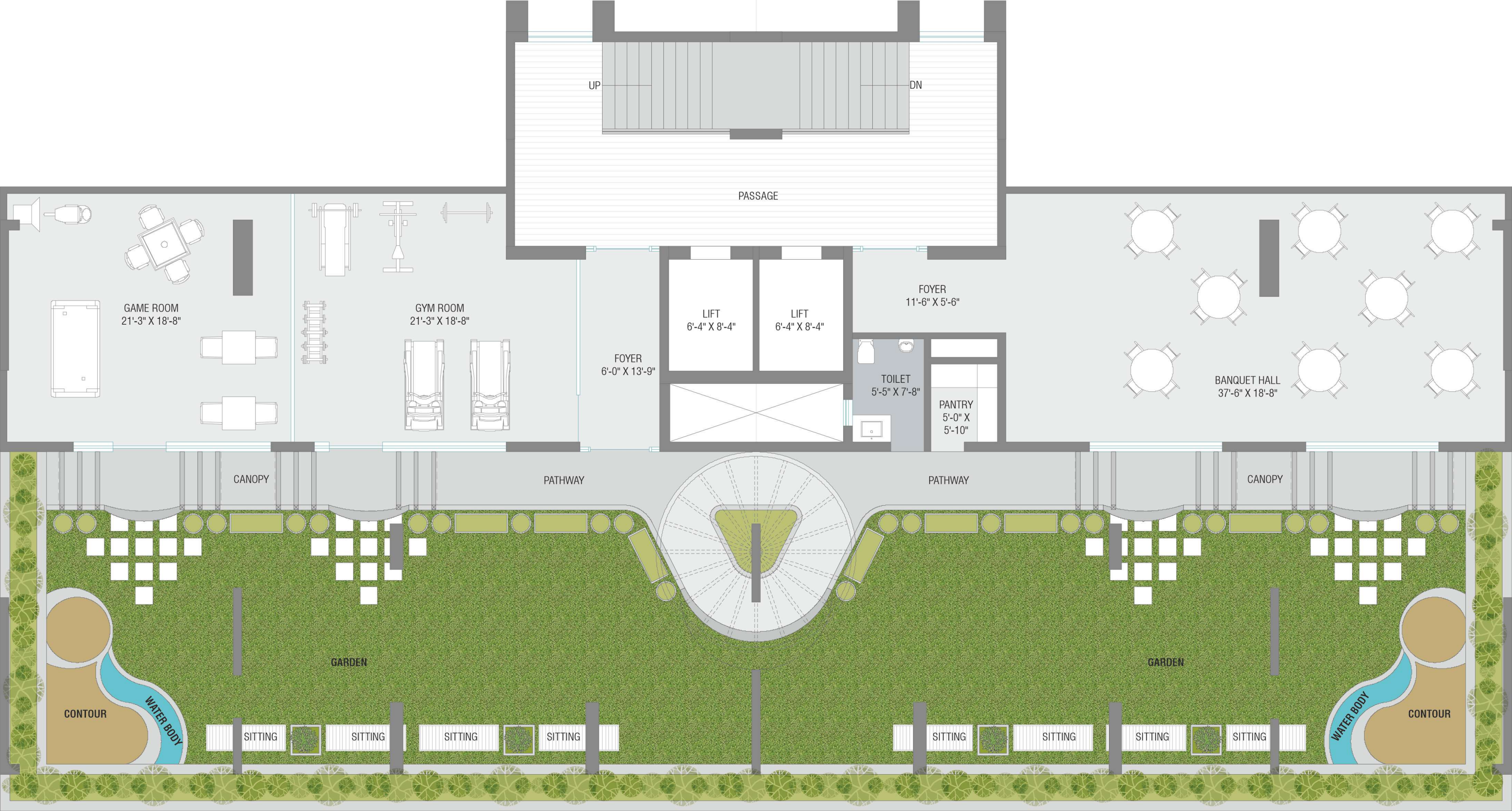


TERRACE FLOOR PLAN  
(LEISURE AMENITIES)

Rising tall to 14 floors, at **Atmosphere 26** you will truly enjoy living on a higher plane. Imagine breath-taking views and an exclusive lifestyle that only comes with the freedom bequeathed by unsurpassed luxury.

Lush landscaping, charming vegetation and cool waters ensure that your home is a green enclave seemingly removed from the rush of the city.

If you have ever wished for a canvas to express your personality, lifestyle and taste, you too will agree that **Atmosphere 26** is just perfect. Bringing with it joy **FOREVER!**

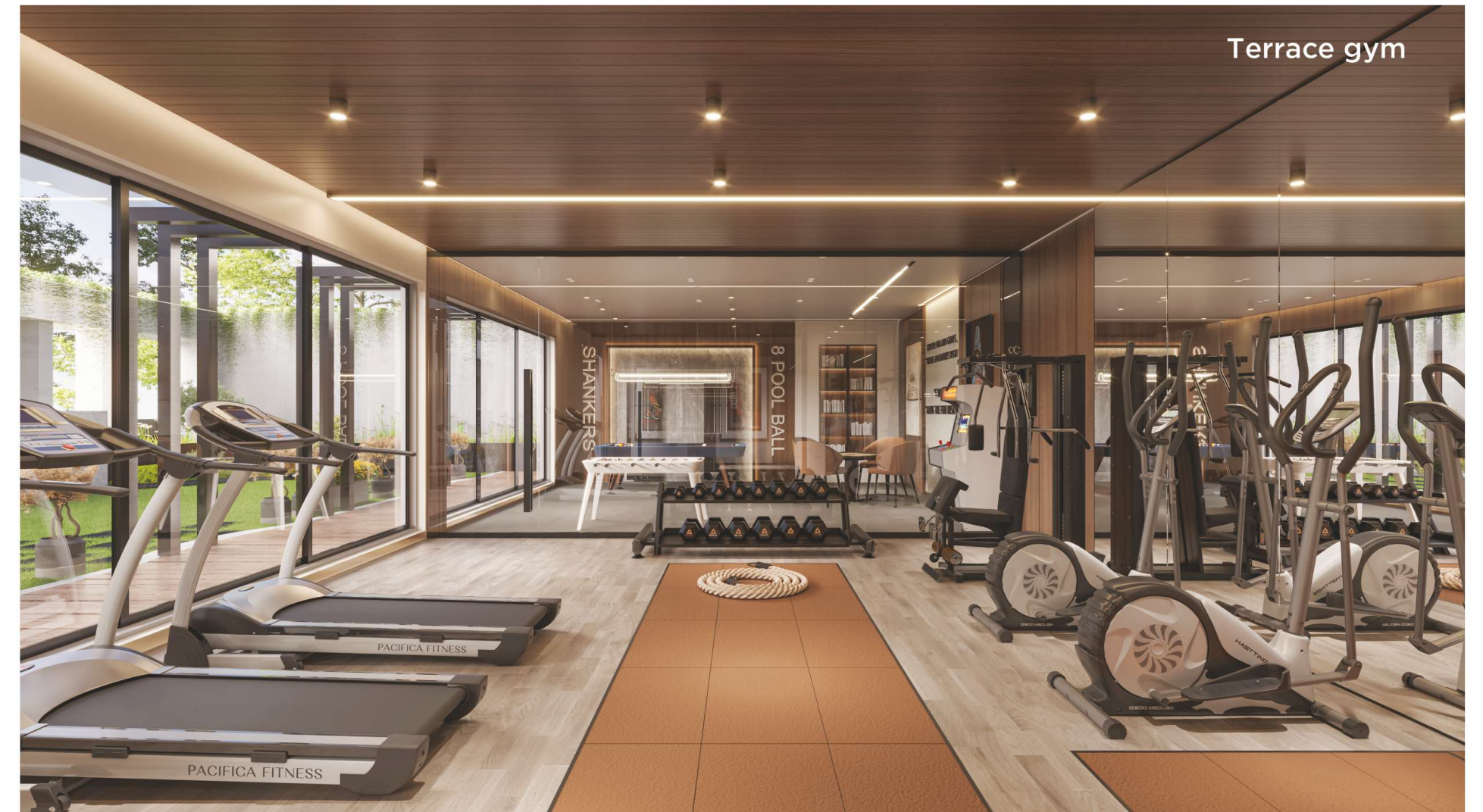




FOREVER

amenities

- Banquet Hall
- Landscaped Garden on Terrace & Ground Floor
- Children Play Area
- Indoor Games Room
- Gym
- Senior Citizen Seating





# FOREVER specifications



## STRUCTURE

- Earthquake resistant R.C.C. frame structure with AAC block masonry.
- 10 ft clear ceiling height.



## LOBBY & FOYER

- Matt Finish Stone Flooring with plush interiors.
- All Lobby Walls & Ceiling in paint .



## WALL FINISH

- 2 Coat Putty with primer finish on internal walls.
- Weather Proof Paint on external walls.



## DOORS & WINDOWS

- Main Door: High Quality Wooden frame door with veneer paneling on both sides.
- Internal Doors: flush doors with 8 feet height. Wooden box frame & both sides laminated.
- Powder coated aluminium sliding windows with mosquito net & toughened glass.



## FLOORING

- Double charged Vitrified Tiles in all rooms.
- Stairs: Stone Treads.



## KITCHEN

- Granite platform with S.S. Sink & Swivel Tap.
- Wash Area with Dado Tiles & Flooring.



## BATHROOMS

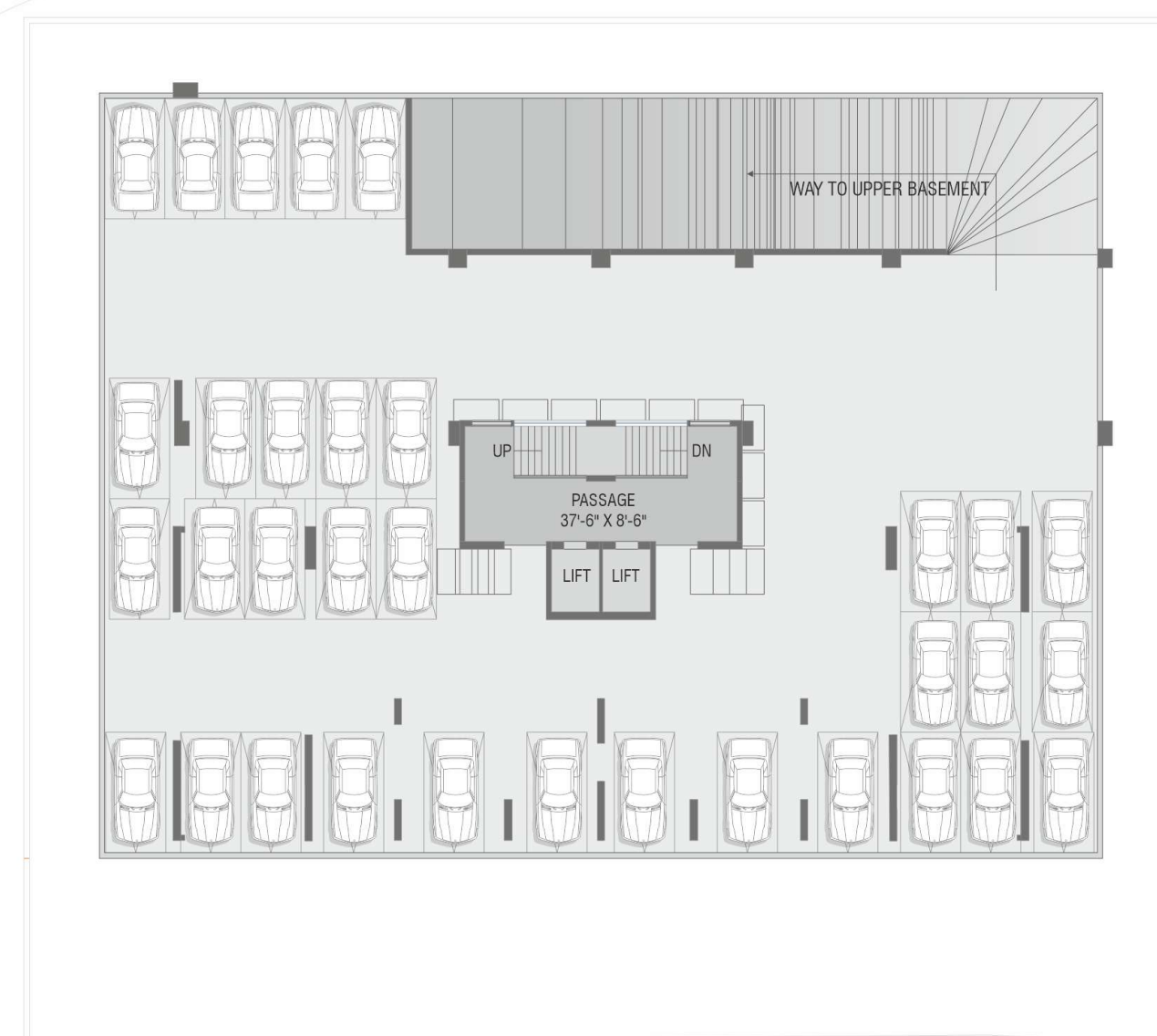
- Premium ceramic tiles, Branded quality bath fittings and sanitary wares.
- Anti Skid Floor Tiles Granite Counter with Ceramic Wash Basin.
- Tiles up to lintel level in all bathrooms.



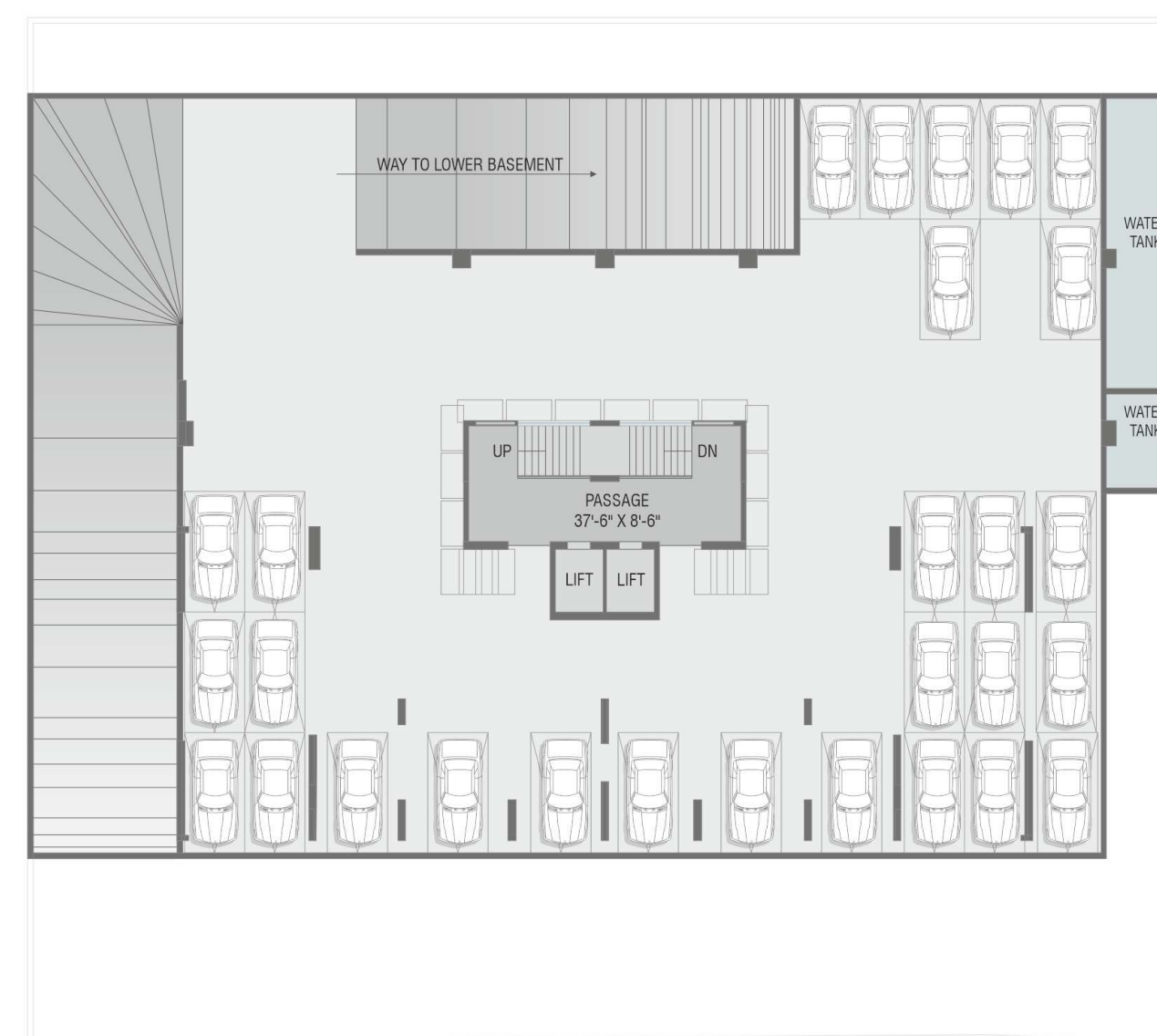
## ELECTRICAL

- Concealed copper ISI wiring, MCB/ELCB & branded modular switches with sufficient electrical points in all areas.
- Provision for TV & Internet points at convenient locations.
- AC piping in all bedrooms & living room.

## LOWER BASEMENT



## UPPER BASEMENT





# FOREVER connected

Our apartment building sits in the heart of the city, making it **FOREVER** connected. Whether you're heading uptown, downtown, or just around town, you'll be at the center of all the action at New Gotri.



## Payment Schedule

Booking Amount Incl. Token	30%
On Plinth Level	10%
On Each Floor Slab Level 04% X 12 =	48%
On Plaster Level	04%
On Flooring Level	04%
Before Possession	04%

NOTE : • All plans are subject to amendments and approval by the relevant authorities. • All photography and computer imagery are artist's impression and are provided for illustrative and indicative purposes only. •While every reasonable care has been taken in providing this information, the Developers cannot be held responsible for any inaccuracy. • Subject to Vadodara Jurisdiction.

Architects:  
space plus  
Architecture • Planning • Interiors

Structure  
COMTEN  
ENGINEERS

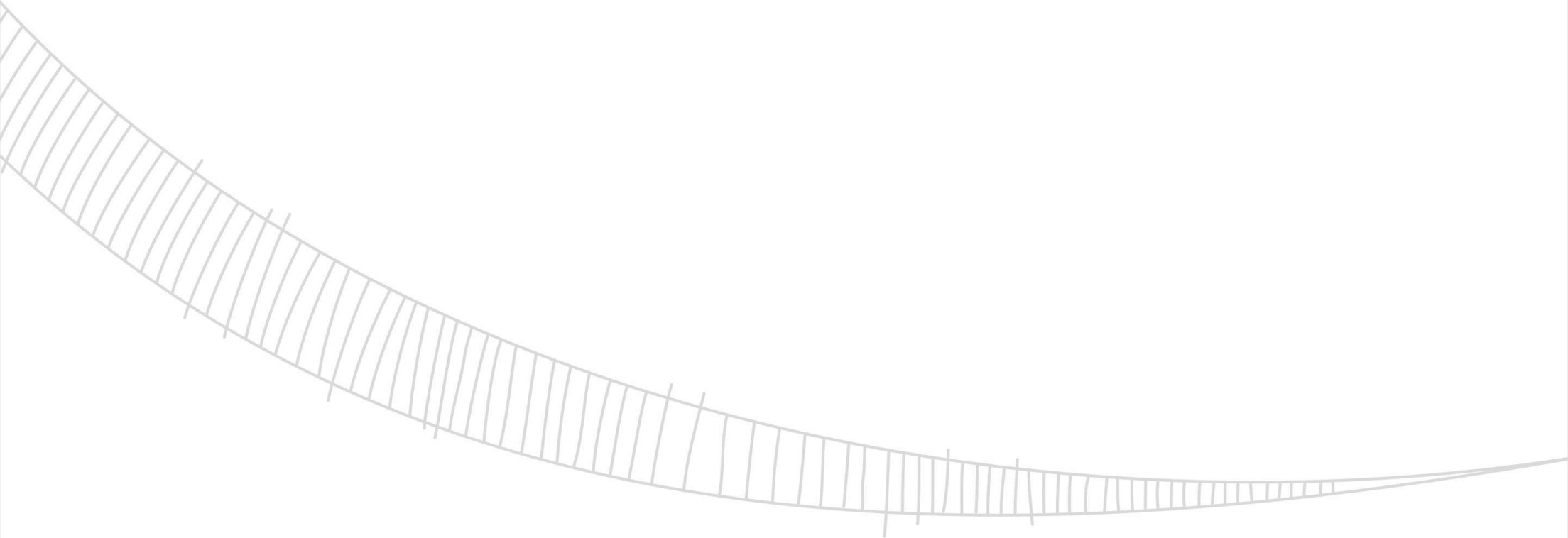
Plumbing Consultant  
Krupalu  
Consultant

Electrical  
Chirag Electricals  
Consulting Engineer, License Electrical Contractor & Supervisor

3d Visualization  
IMPACT 3D







A PROJECT BY

**FOREVER DEVELOPERS**

Atmosphere 26, Nr. Darshanam Club Life,  
Opp. Yash Complex 30mtr. Road, New Gotri,  
Vadodara - 390 016.

**Mo.: 98252 80328 / 98252 80382**

foreverdevelopers26@gmail.com  
**www.foreveratmosphere.in**



Location



Website